



Add More

JOHN DEERE ATTACHMENTS



RIDING LAWN EQUIPMENT

Implements & Attachments

100 Series | S240 Sport Series | EZtrak™ Zero-Turn-Radius Mowers | Select Series™ | X700 Signature Series





Table of Contents

- 4-5 100 Series Tractors
- 6-7 S240 Sport Series Tractors
- 8-9 EZtrak™ Zero-Turn-Radius Mowers
- 10-11 Select Series™ X300 Tractors
- 12-13 Select Series X500 Tractors
- 14-17 X700 Signature Series Tractors
- 18-19 Rotary Tillers / 3-Point Hitch Implements
- 20-23 Front Blades / Tractor Shovels / Snow Blowers / Brooms
 - Front Blades 21
 - Tractor Shovels 21
 - Snow Blowers and Brooms 22-23
- 24-25 Mower Decks: Mulch and Leaf Bagging Kits
- 26-27 Tow-Behind Attachments
 - Aerators (Spike / Plug) 26-27
 - Lawn Roller / Sweeper 27
 - Sprayers and Spreaders 27
 - Utility Carts and Thatchers 26-27
- 28-31 Parts and Attachments for Riding Lawn Equipment
 - Ballast Box 30
 - Buckets and Bucket Holders 31
 - Bumpers and Brush Guards 28
 - Electrical Attachments 28, 30
 - Home Maintenance Kits 30
 - Mower Blades 31
 - Protective Covers (Tractors) 29
 - Seat Covers and Seat Attachments 29
 - Wheel Attachments and Weights 29-30



You already know about the quality of John Deere riding lawn equipment. Whether it's a Select Series or Signature Series lawn and garden tractor, a S240 Sport or 100 Series tractor, or the EZtrak line of zero-turn-radius mowers, we pride ourselves on making lawn equipment that delivers superior mowing performance, season after season.

But our riding lawn equipment does much more than mow. Versatility is built into every machine, especially when you look at our premium line of Select Series and Signature Series tractors. With features like hydraulic clutch PTOs and thick C-channel steel frames, they have the power and backbone to take on serious implements like tillers, tractor shovels, and snow blowers. You'll find plenty of attachment options for all our riding equipment, from bumpers to baggers, tow carts to tractor covers.

And when you decide on the implement or attachment you want, call your local John Deere dealer. John Deere dealers are people who are in touch with your local community, who understand what it takes to maintain your land. Their factory-trained service and parts professionals ensure that your equipment keeps working as hard as you do.

100 Series Tractors

With the exclusive CargO Mount™ system, your 100 Series tractor can do more than just mow. And you can accessorize with sensible attachments like a sun canopy or a tractor cover.





1 Sun Canopy

Provides protection from the sun's rays and gives the operator some cooling shade during hot summer days.

Fits all 100 Series tractors LP51702



2 6.5-Bushel Hopper and Chute

Provides an efficient means of collecting grass clippings and leaves. The hopper design provides great bagging performance, cleaner operation, and easy-to-empty bags. Includes bagging blades.

Fits all 42-in. 100 Series mower decks BG20776
Fits all 48-in. 100 Series mower decks BG20777



3 6.5-Bushel Hopper, Chute, and Power Flow™ Blower

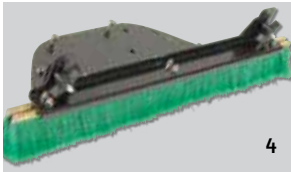
Provides an efficient means of collecting grass clippings and leaves using the Power Flow™ material collection system.

Fits all 54-in. 100 Series mower decks BG20747

4 Grass Groomer - Lawn Striping Kit

Flexible, durable and nonweight-bearing design make it the perfect solution for pattern mowing.

Fits 42-in. 100 Series mower decks LP1001
Fits 48-in. and 54-in. 100 Series mower decks LP1002



5 Front Bumper

The front bumper is an optional attachment for lawn tractors. It offers additional front-end protection. The front bumper also provides a more aggressive look for the tractor.

Double bar - Fits all 100 Series BG20436

6 Cart Foot Pedal Kit

Allows operator to use both hands to lift the cart bed for more natural and efficient unloading.

LP48017



7 Single Bucket Holder

All steel construction can carry up to 18 kg of material. Easily attaches to the rear Cargo Mount™ without tools. (Requires 5-gallon bucket, LPJD400)

Fits all 100 Series tractors LPJD100
LPJD400



8 100 Series Snow Cab

Steel-frame cab protects operator from the elements. Internal non-scratch magnets ensure a custom fit. Interior pockets hold accessories.

Fits D100 Series tractors LP31342



9 Utility Cart, Poly*

Poly Cart is rust and dent resistant and can be used to haul a variety of materials. Easy dump release; steep angle for complete emptying.

7P (7 cu. ft.) - For use on all John Deere Riding Lawn Tractors and EZtrak Mowers LP21935

10P (10 cu. ft.) - For use on all John Deere Riding Lawn Tractors and EZtrak Mowers LPPCT10JD

17P (17 cu. ft.) - For use on all John Deere Riding Lawn Tractors LPPCT17JD

8Y (8 cu. ft.) - For use on all John Deere Riding Lawn Tractors. Converts from tow-behind to push cart. (shown) LP22755

13YS Swivel Cart LP49039

*The loaded weight of the utility cart not to exceed the weight of the tractor and operator. The loaded weight of any equipment towed by an EZtrak mower not to exceed 113 kg.



10 MCS 6

Easily eliminate yard waste without leaving the tractor seat using the conveniently located lever and smooth release system. Designed specifically for John Deere tractors equipped with a two-bag Material Collection System (MCS).

Fits all 100 Series 2-bag MCS LP47167



11 Multi Tool

Save space, storage and money with this all-in-one tool. Includes a 40-in. weight tray that holds up to 45 kg, a core aerator and a dethatcher.

LP39089





S240 Sport Tractor

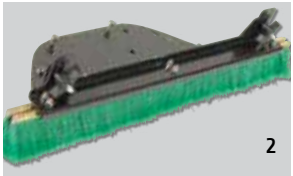
With more style, comfort, and performance, the S240 Sport tractor easily handles a variety of tow-behind equipment and mounted equipment. From a rear bagger to a front blade or snow blower for snow removal, the S240 is one of our most versatile and accommodating lawn tractors yet.



1 6.5-Bushel Hopper and Chute

Provides an efficient means of collecting grass clippings and leaves. The hopper design provides great bagging performance, cleaner operation, and easy-to-empty bags. Includes bagging blades.

Fits all 42-in. S240 Sport mower decks BG20776



2 Grass Groomer – Lawn Striping Kit

Flexible, durable and nonweight-bearing design make it the perfect solution for pattern mowing.

Fits 42-in. S240 Sport mower decks LP1001



3 Single Bucket Holder

All steel construction can carry up to 18 kg of material. Easily attaches to the rear CargO Mount™ without tools. *(Requires 5-gallon bucket, LPJD400.)*

Fits all S240 Sport Series tractors LPJD100
LPJD400



4 Cart Foot Pedal Kit

Allows operator to use both hands to lift the cart bed for more natural and efficient unloading.

LP48017



5 Multi Tool

Save space, storage and money with this all-in-one tool. Includes a 40-in. weight tray that holds up to 45 kg, a core aerator and a dethatcher.

LP39089

6 Snow Cab

Steel-frame cab protects operator from the elements. Internal non-scratch magnets ensure a custom fit. Interior pockets hold accessories.

Fits all S240 Sport Series tractors LP31342



7 MCS 6

Easily eliminate yard waste without leaving the tractor seat using the conveniently located lever and smooth release system. Designed specifically for John Deere tractors equipped with a two-bag Material Collection System (MCS).

Fits all S240 Sport Series 2-bag MCS LP47167



8 Utility Cart, Poly*

Poly Cart is rust and dent resistant and can be used to haul a variety of materials. Easy dump release; steep angle for complete emptying.

7P (7 cu. ft.) - For use on all John Deere Riding Lawn Tractors and EZtrak Mowers LP21935

10P (10 cu. ft.) - For use on all John Deere Riding Lawn Tractors and EZtrak Mowers LPPCT10JD

17P (17 cu. ft.) - For use on all John Deere Riding Lawn Tractors LPPCT17JD

8Y (8 cu. ft.) - For use on all John Deere Riding Lawn Tractors. Converts from tow-behind to push cart. (shown) LP22755

13YS Swivel Cart LP49039

*The loaded weight of the utility cart not to exceed the weight of the tractor and operator. The loaded weight of any equipment towed by an EZtrak mower not to exceed 113 kg.



EZtrak Zero-Turn-Radius Mowers

With a Z200, Z400 or Z600 Series EZtrak Mower, you've probably been pleasantly surprised at how easy they are to operate. Here's another surprise: the many attachments you can put on your EZtrak. Take a look.



1 15-Gallon Sprayer

Spray a variety of liquids, such as liquid fertilizer, weed killer, tree spray and de-icer. Boom sprays a 60-in. swath and a 19-foot hose and spray wand spot sprays lawns, shrubs, etc.

For Z400s and Z600s

LP36199



2 Headlight Kit

Kit includes one headlight that provides additional lighting when needed.

Z225, Z245 (2010 and earlier model year, SN -100,000 only)

BM22807

Z225, Z245 (2011 and later model year, SN 100,001 - only)

BM23574

Z235, Z255 (2013 and later model year, SN 130,001 - only)

BM24357

Z425, Z445, Z465 (2010 and earlier model year, SN -100,000 only)

BM22808

Z425, Z435, Z445, Z465, Z625, Z645, Z655, Z665 (2011 and later model year, SN 100,000 - only)

BM23575

3 Floor Mat

Stylish non-slip, washable rubber floor mat protects the foot deck of your mower. Keeps the foot deck clean and scratch-free. Floor mat is chemically and environmentally resistant.

Z225, Z245, Z400s, Z600s

M157435

Z235, Z255

BM24486

4 Deck Front Roller Kit

Mounts at front of mower deck to help: 1.) prevent scalping the lawn and 2.) smooth out mowing job.

For 48-in. mower on Z425, Z435, Z445

BM22596

For 54-in. mower on Z425, Z435, Z445

BM22595





5 6.5-Bushel Hopper and Chute Assembly

The hopper design provides an efficient means of collecting grass clippings and leaves.

For Z235, 42-in. deck	BM24286
For Z255, 48-in. deck	BM24384



6 6.5-Bushel Hopper and Chute Assembly with the Power Flow System

Provides an efficient means of collecting leaves and grass clippings using the Power Flow material collection system.

For Z425, Z435, Z445, 48-in./54-in.

Hopper	BM23634
Chute	BM21681
Power Flow Blower, 48-in.	BM21871
Power Flow Blower, 54-in.	BM21873

For Z645/48-in. HC, Z625, Z655/54-in. HC

Hopper	BM23634
Chute	BM21681
Power Flow Blower, 48-in. HC (Z645) and 54-in. HC (Z625, Z655)	BM23635



7 Grass Groomer - Lawn Striping Kit

Lawn striping kit is designed with inherent characteristics of flexibility, durability, and nonweight bearing design, making it the perfect solution for pattern mowing.

For 42-in. mower on Z225	LP22760
For 42-in. mower on Z235	LP47796
For 48-, 54-, 62-in. mower on Z245, Z425, Z435, Z445, Z465	LP1000
For 48-, 54-in. HC mower on Z445, Z625, Z645, Z655	LP36265

Special Edition Kit

The special edition kit includes the foot extensions (AM137437), rear hitch (AM137381) and rear bumper (AM137380). This kit saves you more versus purchasing the individual items.

For Z400S and Z600S	BM22568
---------------------	---------

8 Foot Rest Extensions

Makes mowing more comfortable for the operator. Includes bolt-on left and right foot rests.

For Z400S and Z600S	AM137437
---------------------	----------



9 Rear Bumper

Bolts to the tubular frame for solid support. Provides protection for the rear of the EZtrak Mower.

For Z400S and Z600S	AM137380
---------------------	----------

10 Rear Hitch

Bolts solidly to tubular frame and provides towing capability. The rear bagger bracket is included with the rear hitch.

For Z400S and Z600S	AM137381
---------------------	----------

11 Utility Cart, Poly*

Rust- and dent-resistant, the poly cart can be used to haul many types of materials. Easy dump release (the cart angles steeply) for complete emptying.

7P (7 cu. ft.) Maximum tow capacity 113 kg	LP21935
10P (10 cu. ft.) Maximum tow capacity 113 kg	LPPCT10JD

12 Foot Lift Kit

Upgrade your EZtrak mower with a foot lift kit to easily raise or lower the mower deck without the use of hands. An operator can quickly lift the mower deck with the foot lift when encountering unexpected obstacles such as tree roots, bottles or rocks.

Z235, Z255	BM24259
Z425, Z435, Z445	BM22970
Z465	BM24243

13 Lawn Sweeper

Hauls 17 bu. of material. Convenient brush-height adjuster has eight positions. Premium features: adjustable hitch, large 12-in. x 3-in. wheels, and collapsible for storage.

For use on all John Deere Riding Lawn Tractors and EZtrak Series. Rear hitch required.

42-in.	LPST542JD
44-in.	LP49038

14 Attachment Bar and Hitch Kit

Provides towing capability for approved equipment. It also provides additional protection for the back of the machine.

Z235, Z255	BM24481
------------	---------

*The loaded weight of the utility cart not to exceed the weight of the tractor and operator. The loaded weight of any attachment towed by an EZtrak mower not to exceed 113 kg.



Select Series X300 Tractors

Not only are these tractors maneuverability masters, they're also versatility pros.

Whether you want to mulch or bag, we can make it happen for you. Take a look at how your X300 can be a master of efficiency as well.



1 7-Bushel Power Flow System

Provides an efficient means of collecting grass clippings and leaves using the Power Flow material collection system.

X300 Series, except X300R (Requires Power Flow Chute and Blower. Front ballast recommended.)	BM21679
Power Flow Chute (7 bu.)	BM21681
Power Flow Blower, 48-in.	BM22696
Power Flow Blower, 54-in.	BM22697

Loose-knit bags for 7-bu. hopper

Loose-knit bags are available to replace the standard bags on rear baggers or Power Flow collection systems. They allow more air to flow through for more complete bag filling.

For 7-bu. rear bagger or Power Flow, 2 required	AM135486
---	----------



2 7-Bushel Rear Bagger System

Provides an efficient means of collecting grass clippings and leaves. The hopper design provides great bagging performance, cleaner operation, and easy-to-empty bags.

X300, X304, X310 (Requires Power Flow Chute and Blower. Front ballast recommended.)	BM21679
Rear Bagger Chute for 38-in. mower	BM20982
Rear Bagger Chute for 42-in. mower	BG20766

3 MCS 7

Easily eliminate yard waste without leaving the tractor seat using the conveniently located lever and smooth release system. Designed specifically for John Deere tractors equipped with a two-bag Material Collection System (MCS).

Fits all X300 Series 2-bag MCS	LP47168
--------------------------------	---------

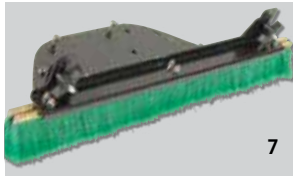




5



6



7



8



9



10

4 MC519 Material Collection System

The versatility of two products in one - a utility cart or 19-bu. material collector. Requires Power Flow blower and chute.

X320, X324, X340, X360 with 48- or 54-in. mower (Requires Power Flow Chute and Blower for collecting material.)	LP49228
Power Flow Chute (MC519)	BM20855
Power Flow Blower, 48-in.	BM22696
Power Flow Blower, 54-in.	BM22697

5 12-Volt Outlet Kit (X300)

The 12-Volt outlet kit can be installed on the tractor to provide power for various 12-Volt equipment.

Model Years through 2011	AM136716
Model Year 2012 - Current	AM136716, 57M7590 terminal, 57M7690 fuse

6 Rear Deflector Kit (X300R)

Optional rear deflector for X300R Rear-Discharge Tractor easily installs in place of hopper. No tools required for installation. Deflects clippings in an even pattern behind the tractor.

X300R	BM22196
-------	---------

7 Grass Groomer - Lawn Striping Kit

Flexible, durable and nonweight-bearing design make it the perfect solution for pattern mowing.

Fits 42-in. X300 Series mower decks	LP1001
Fits 48-in. and 54-in X300 Series mower decks	LP1002

8 40-in. Tractor Shovel

Allows tractor to pick up and move material. Opening design and lift height of the blade assure complete emptying of material. When the scoop is raised, the tractor shovel can be used to doze, scrape, or level material.

X300 and X500 Series	LP40000
----------------------	---------

9 Winter Grille Cover

Provides faster engine warm-up and higher winter operating temperature. Prevents engine carburetor from icing-up while blowing or blading snow, or during similar applications.

X300 Series	AM145350
-------------	----------

10 Sun Shade

Provides an effective way to keep the sun off of the operator. Mounts to the heavy-duty CargO Mounts. The 7-bu. hopper can be installed and used with the sun shade installed.

X300 and X500 Series, except X300R	BM23054
------------------------------------	---------

11 Weather Enclosure (X300)

Steel frame cab protects operator from the elements. Easy entry with hinge-door access. Zippered doors with snap-lock system holds them open.

X300 Series, except X300R	LP36740
---------------------------	---------

12 25-Gallon Mounted Sprayer (X300/X500 M-T)

Spray a variety of material including liquid fertilizer, weed killer, tree spray and de-icer. Boom sprays 90-in. spray swath. Includes a 19-ft. hose and spray wand for spot spraying lawns, shrubs, etc.

X300 and X500 Series, except X300R	LP22861
------------------------------------	---------

13 Electric Lift Kit

Makes front blade and snow blower implements easier to use and more efficient. Convenient dash-mounted control switch provides controlled downforce for increased usability of front blades. For X300s and X500s equipped with foot lift, except the X300R Rear Discharge Tractor.

X300 and X500 Series, except X300R	LP33711
------------------------------------	---------

Manual Angling Kit *(image shown on page 21)*

Allows angling blade from the tractor seat for operator convenience.

For 44-in. Front Blade	LP33712
------------------------	---------

14 Front Weight Bracket/Bumper

Available to replace the tractor's standard front bumper. Makes Quik-Tatch weights an alternative to front-wheel weights for adding front ballast.

BM23621

15 1.5-Amp Battery Charger and Maintainer

Fully automatic 1.5-amp battery charger and maintainer safely charges most batteries that require long storage periods. It is particularly useful during winter months when the vehicle is not being used regularly, to ensure the battery stays charged. Automatically determines if the battery is 6- or 12-Volt and adjusts accordingly.

TY25866

16 Plastic Skid Shoe

Reduce scratching of driveway and sidewalk surfaces.

44-, 47-, 54-in. Snow Blowers, two required	M157831
---	---------



11



12



13



14



15



16

Select Series X500 Tractors

Not only are these tractors multi-terrain, they're also multi-talented. X500s travel where you need to go and do serious work. Heavy-duty frames work with ground-engaging implements like tillers to help you work the land like never before.



1 7-Bushel Power Flow System

Provides an efficient means of collecting grass clippings and leaves using the Power Flow material collection system.

X500 Series (Requires Power Flow Chute and Blower.)	BM21679
Power Flow Chute (7-bu.)	BM21681
Power Flow Blower, 48-in.	BM22696
Power Flow Blower, 54-in.	BM22697

Loose knit bags for 7-bu. hopper

Loose-knit bags are available to replace the standard bags on rear baggers or Power Flow collection systems. They allow more air to flow through for more complete bag filling.

For 7-bu. rear bagger or Power Flow, 2 required	AM135486
---	----------



2 14-Bushel Power Flow Collection System

Large 14-bu. capacity lets you collect more material with fewer stops to empty bags.

X500 Series with a 48- or 54-in. mower (Requires Power Flow Chute and Blower.)	BM21680
Power Flow Chute (14-bu.)	BM21682
Power Flow Blower, 48-in.	BM22696
Power Flow Blower, 54-in.	BM22697



3 MCS19 Material Collection System

The versatility of two products in one — a utility cart or 19-bu. material collector. Requires Power Flow blower and chute.

X500 Series with 48- or 54-in. mower (Requires Power Flow Chute and Blower for collecting material.)	LP49228
--	---------



Power Flow Chute (MC519)	BM20855
Power Flow Blower, 48-in.	BM22696
Power Flow Blower, 54-in.	BM22697

4 MC542 Material Collection System

Large 42-bu. capacity with 83-in. clamshell opening. Fits 17P cart. Requires pre-cut mower boot for easy fit to 48-, 54-, 60-, and 62-in. mower decks. 17P cart purchased separately.

Compatible with X500 Multi-Terrain and X700 tractors	LP22834
Mower Boot 48-in. deck	LP23080
Mower Boot 54-in. deck, C/X	LP23081
Mower Boot 54-in. HC deck	LP44079
Mower Boot 60-in. deck, 7-Iron™	LP23082
Mower Boot 62-in. deck	LP23083
MC542 Hose Kit	LP39450

5 Grass Groomer - Lawn Striping Kit

Flexible, durable and nonweight-bearing design make it the perfect solution for pattern mowing.

Fits 48- and 54-in. X300 and X500 Series mower decks	LP1002
--	--------

6 MCS 8

Easily eliminate yard waste without leaving the tractor seat using the conveniently located lever and smooth release system. Designed specifically for John Deere tractors equipped with a seven-bushel two-bag Material Collection System (MCS).

Fits all X500 and X700 Series 2-bag MCS	LP47169
---	---------





7 Manual Integral Hitch

Integral hitch permits the use of certain rear-mounted implements, such as a blade or plow.

X500 Series LP21357



8 Power Integral Hitch

Uses the tractor hydraulics to lift certain rear-mounted sleeve hitch implements.

Compatible with X530, X534, X540 and X590 Multi-Terrain Tractors LP22835



9 Cultivator – Integral (Sleeve) Hitch

Excellent for removing weeds and loosening soil between planted rows. Adjustable widths from 18- to 40-in.

X500 Series (Requires LP21357 Manual Integral Hitch or LP22835 Power Integral Hitch.) LPCC55



10 42-in. Rear Blade – Integral (Sleeve) Hitch

Designed tough and durable to handle grading and backfilling tasks. The blade angles and locks up to 30 degrees and rotates 180 degrees for pushing.

X500 Series (Requires LP21357 Manual Integral Hitch or LP22835 Power Integral Hitch.) LPBB56

11 38-in. Box Scraper – Integral (Sleeve) Hitch

Move material, backfill, grade, landscape or level. The blade angles and locks 30 degrees in either direction for pushing instead of pulling.

X500 Series (Requires LP21357 Manual Integral Hitch or LP22835 Power Integral Hitch.) LPBS38



12 25-Gallon Mounted Sprayer (X300/X500 M-T)

Spray a variety of material including liquid fertilizer, weed killer, tree spray and de-icer. Boom sprays 90-in. spray swath. Includes a 19-ft. hose and spray wand for spot spraying lawns, shrubs, etc.

X300 and X500 Series, except X300R LP22861



13 Moldboard Plow – Integral (Sleeve) Hitch

The rolling coulter blade cuts through the soil, the plow digs the furrow, while the moldboard gently turns under old vegetation to make way for new planting.

X500 Series (Requires LP21357 Manual Integral Hitch or LP22835 Power Integral Hitch.) LPPP510



14 Disk Harrow – Integral (Sleeve) Hitch

Break up chunky, plowed ground and prepare seedbeds with uniform, pulverized soil. The disk angle and spacing can be adjusted according to soil conditions at 10, 15 or 20 degrees.

X500 Series (Requires LP21357 Manual Integral Hitch or LP22835 Power Integral Hitch.) LPDD55

15 Winter Grille Cover

Provides faster engine warm-up and higher winter operating temperature. Prevents engine carburetor from icing-up while blowing or blading snow, or during similar applications.

X500 (SN 020001-), X530, X534 (SN 060001-), X590 AM145350
X500 (SN-020000), X534 (SN-060000) AM136692

16 Weather Enclosure (X500 M-T)

Steel frame cab protects operator from the elements. Easy entry with hinge-door access. Zippered doors with snaplock system holds them open.

X500 Series LP36741

17 Sun Shade

Provides an effective way to keep the sun off of the operator. Mounts to the heavy-duty CargO Mounts. The 7-bu. hopper can be installed and used with the sun shade installed.

X300 and X500 Series, except X300R BM23054

18 40-in. Tractor Shovel

Opening design and lift height of the blade assure complete emptying of material. When the scoop is raised, the tractor shovel can be used to doze, scrape, or level material.

X300 and X500 Series LP40000

19 Electric Lift Kit

Makes front blade and snow blower implements easier to use and more efficient. Convenient dash-mounted control switch provides controlled downforce for increased usability of front blades.

X300 and X500 Series, except X300R LP33711

Manual Angling Kit *(image shown on page 21)*

Allows angling blade from the tractor seat for operator convenience.

48-in. Front Blade BM23448

20 Front Weight Bracket/Bumper

Replaces tractor's standard front bumper. Makes Quik-Tatch weights an alternative to front-wheel weights for adding front ballast.

X500 (SN 020001-), X530, X534 (SN 060001-) BM23621

21 Adjustable Armrest Kit

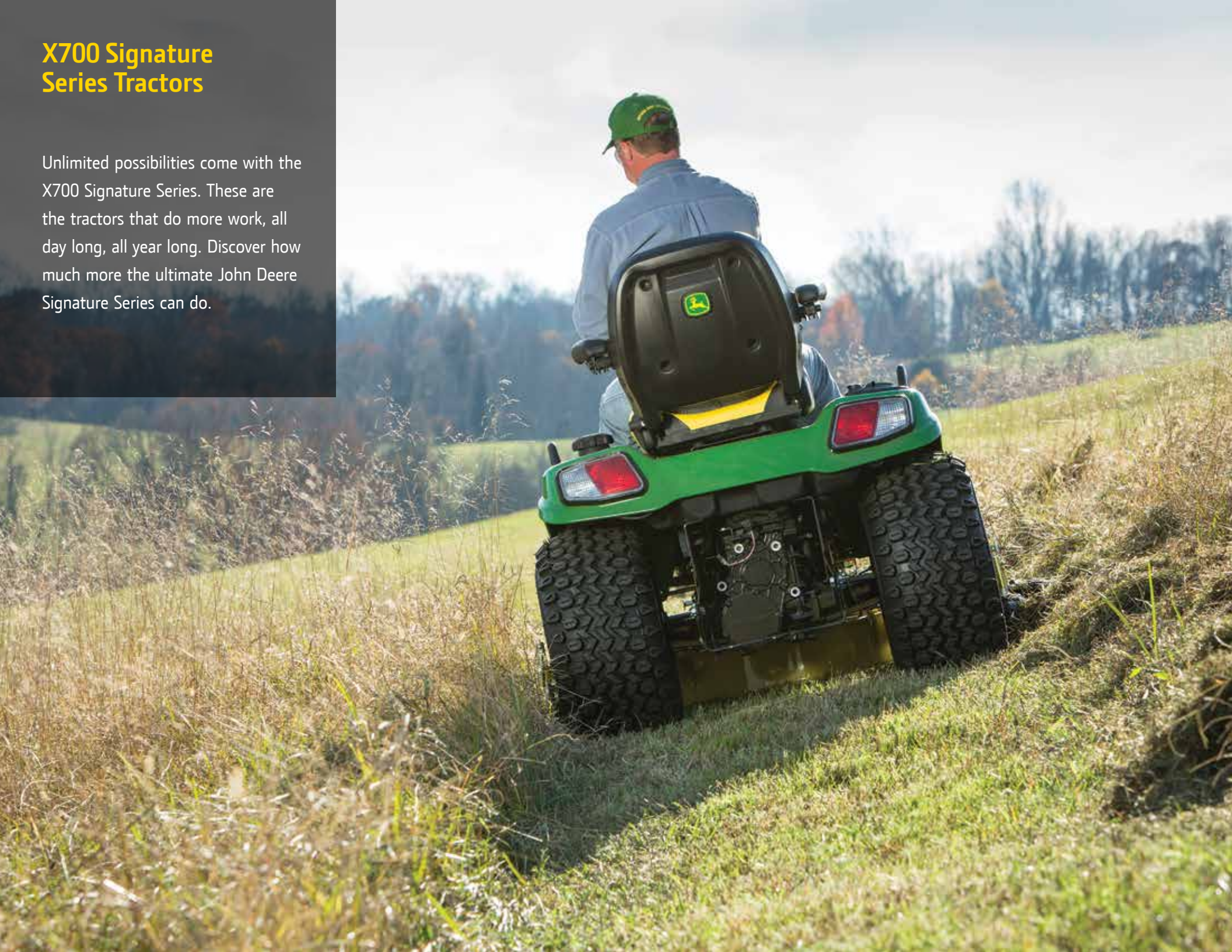
Will increase operator support and comfort, reducing fatigue and improving productivity, especially when mowing for extended periods of time. Armrest angle is adjustable to suit the operator.

Armrest Kit (21-in. seat, X534 and X540 (SN 060001-) and X590 BM23761



X700 Signature Series Tractors

Unlimited possibilities come with the X700 Signature Series. These are the tractors that do more work, all day long, all year long. Discover how much more the ultimate John Deere Signature Series can do.





1

1 14-Bushel Power Flow System

Large 14-bushel capacity.

X700 Series (Requires blower, chute, and Click-N-Go Brackets.) Not compatible with Cabs.	BM20671
Click-N-Go Brackets	BM20714
Power Flow Chute (14-bu.)	BM21682
Power Flow Blower, 48-in.	BM22696
Power Flow Blower, 54-in. HC	BM24333
Power Flow Blower, 60-in. HC	BM24514



2

2 7-Bushel Power Flow System

Provides an efficient means of collecting grass clippings and leaves using the Power Flow material collection system.

X700 Series (Requires Power Flow Blower and Chute and Click-N-Go brackets.) Not compatible with Cabs.	BM20780
Click-N-Go Brackets	BM20714
Power Flow Chute (7 bu.)	BM21681
Power Flow Blower, 48-in.	BM22696
Power Flow Blower, 54-in. HC	BM24333

Loose-knit bags for 7-bu. hopper

Loose-knit bags are available to replace the standard bags on rear baggers or Power Flow collection systems. They allow more air to flow through for more complete bag filling.

For 7-bu. rear bagger or Power Flow, 2 required	AM135486
---	----------



3

3 Deluxe High-Back Seat

Upgrade your X700 Series tractor with the seat from special edition models. Includes high-back seat with adjustable armrests, back angle and lumbar for lower-back comfort, as well as parallel bar, spring and shock suspension. Attaching parts are required.

X700 Series	BM21490
Attaching Parts for Deluxe High-Back Seat	BM21332
Armrest Kit (fits X700 standard seat only)	BM24426



4

4 Front Fender Kit

Front "Special Edition" fenders are available (except for X724, X734, X744, and X754 models) for protection from mud and debris. Includes fenders and mounting parts for both front wheels.

X700, X720, X740 (Not compatible with-48 in. mower deck)	BM21536
X728, X748 (MFWD)	BM21465
X728, X729, X748, X749 (Full-time 4WD)	BM22717
X710, X730, X750	BM24429
X738, X739, X758	BM24430

5 MCS 14

Easily eliminate yard waste without leaving the tractor seat using the conveniently located lever and smooth release system. Designed specifically for John Deere tractors equipped with a three-bag Material Collection System (MCS).

Fits all 3-bag MCS	LP47170
--------------------	---------



5

6 X700 Signature Series Weather Enclosure

This roomy steel-frame cab keeps the operator working no matter the weather, shielding from snow, rain, sun, and wind. Dual-hinged doors allow easy entrance from either side, and internal non-scratch magnets on the zippered door ensure a custom fit. Super-clear vinyl windows are cold crack tested to -20°C, while zippered windows and vent panels allow plenty of airflow and reduce interior condensation. Assembles and installs with standard hand tools in one hour.

X700 Series tractors	LP41114
----------------------	---------



6

7 X700 Signature Series Hard-side Cab

Designed to offer the ultimate in operator comfort, this hard-side cab also provides maximum visibility for mowing, snow blowing, and other operations. Cab is rollover protection structure (ROPS) certified for extra protection.

X710, X730, X734, X738, X739, X750, X754, X758	9356M
--	-------



7

8 Heater Kit (hard-side cab)

Using heat from the liquid-cooled engine, this heater kit includes a fan that distributes warm air throughout the cab.

X710, X730, X734, X738, X739, X750, X754, X758	BM25033
Heater Quick-Connect Kit	BM25094



8

X700 Signature Series Tractors

continued



9

9 Strobe Light Kit

Make sure others can see your tractor with our strobe light kit.

BM25063

Switch Panel Fuse Block Kit (not shown)

The fuse block switch panel allows one fused electrical wire from the tractor to the cab to power all accessories.

BM25064



10

Side-View Mirror Kit (not shown)

Exterior side-view mirrors allow the operator to see what is behind the tractor.

BM25062



11

Interior Rear-View Mirror Kit (not shown)

Interior rear-view mirror kit stays clear, even when operating in inclement weather.

BM25081

10 Rear Wiper Kit (hard-side cab)

The rear panel wiper is electronically operated and improves operator visibility to the rear.

X700 Series tractors with hard-side cab

BM25061

11 Work Light Kit (hard-side cab)

Improve visibility of the work area with a work light kit.

X700 Series tractors with hard-side cab

BM25082



12

12 MC542 Hose Kit

Manual suction-hose kit is compatible with the MC542 (LP22834). Conveniently vacuum yard debris in hard-to-reach areas. Built-in hose and handle storage. Clear vacuum hose.

LP39450

13 25-Gallon Mounted Sprayer X700

Spray a variety of material including liquid fertilizer, weed killer, tree spray and de-icer. Boom sprays a 90-in. swath. Includes a 19-ft. hose and spray wand for spot spraying lawns, shrubs, etc.

Compatible with X700 tractors

LP22862

14 3-Point Hitch

Conveniently attach rear-mounted implements to the tractor. Hitch is raised and lowered with tractor hydraulic control lever.

Cat. 0 - X700 Series (Requires BM22284 Adaptor Kit.)

BM17327

Adaptor Kit for X700s Cat. 0 Hitch

BM23883

Cat. 1 - X700 Series

BM23882

15 MC519 Cart and Material Collection System

Provides the versatility of two products in one – a utility cart or a 19-bu. material collector.

X700 Series (Requires blower and chute for collecting material.)

LP49228

Attaching parts for X700 Series (required)

LP52039

Power Flow Chute (MC519)

BM20855

Power Flow Blower, 48-in. mower deck

BM22696

Power Flow Blower, 54-in. mower deck

BM22697

Power Flow Blower, 54-in. HC mower dec

BM24333

Power Flow Blower, 60-in. HC and 60-in. 7-Iron Deck

BM24514

Power Flow Blower, 62-in. mower deck

BM21496



13



14



15



16

16 MC542 Material Collection System

Large 42-bushel capacity with 83-in. clamshell opening. Fits 17P cart. Requires pre-cut mower boot for easy fit to 48-, 54-, 60-, and 62-in. mower decks. 17P cart purchased separately.

Compatible with X500 Multi-Terrain and X700 tractors	LP22834
Mower Boot 48-in. mower deck	LP23080
Mower Boot 54-in. mower deck	LP23081
Mower Boot 54-in. HC and 60-in. HC decks	LP44079
Mower Boot 60-in. 7-Iron mower deck	LP23082
Mower Boot 62-in. mower deck	LP23083



17

17 iMatch™ Quick-Hitch

Fits on the 3-point hitch and makes hookup easy for most Category 1 implements.

X700 Series	LVB25976
-------------	----------



18

18 Rear Receiver Hitch Kit

Rear receiver hitch kit bolts on the tractor rear hitch plate to provide a standard 1-1/4-in. x 1-1/4-in. receiver hitch.

X700 Series	BM20877
-------------	---------

19 1.25-in. (38-mm) Hitch Drawbar Kit for Receiver Hitch

The drawbar kit may be used on the front or rear of tractor. Provides a hitch hole further back than the standard hitch-plate hole, and requires Rear Receiver Hitch Kit. (Shown with PM05101 optional ball for hitch.)

X700 Series	BM23989
-------------	---------



19

20 Click-N-Go Brackets

Install on the rear of tractor to provide a quick and easy way to install and remove rear-mounted attachments, such as a rear bagger or ballast box.

X700 Series	BM20714
-------------	---------



20

21 Front Light Kit

Includes two 37.5-watt lights, mounting frame, and wire harness. Attaches to the quick-hitch. Hood tilts forward for access to the engine.

X700 Series	BM20753
-------------	---------



21

22 540 RPM Rear PTO Drive

Used to drive stationary and 3-point-hitch-mounted implements. Three-position control lever; mid PTO, rear PTO only, and mid and rear PTO. Dealer installation recommended.

X700 Series tractors (produced thru mid-June, 2010)	BM21914
X700 Series tractors (produced after mid-June, 2010)	BM23588

See sales manual for tractor serial number break.



22

Rotary Tillers / 3-Point Hitch Implements

Preparing seedbeds, plowing a new garden, leveling and grading: it's all within reach with our rotary tillers and 3-point hitch implements.



1

1 30-in. Mechanical Tiller

A real timesaver for preparing seedbeds, controlling weeds, and other tillage jobs. Easily installed and removed in only a few minutes. Full 30-in. tilling width provides good productivity. Tines are offset to one side so tire tracks can be eliminated.

X500, X520, X530, X540 and X590 (Two 19 kg weights required on front of tractor) SKU23030

2 42-in. Hydraulic Tiller

A real time saver in preparing seedbeds, controlling weeds, and other tillage jobs. Tiller is quiet, powerful, and will till up to 6 inches deep. Can be operated with the tine shaft turning in conventional direction for garden tilling or counter-rotating for jobs like sod breaking.

X530, X540 and X590 (Requires four 19 kg weights for front ballast. X530 also requires BM23621 Front Weight Bracket.) SKU23042

X700 Series (72 kg of front ballast and 3-Point Hitch required.) 4392M



2

Adjustable Skid Shoes

Installed on each side of the tine housing and adjustable to six positions to control tilling depth. Makes operation easier and tilling depth more precise.

42-in. Hydraulic Tiller

BM19406



3

3 25-Bushel Frontier Manure Spreader

Manure spreader can be used to evenly spread manure or mulch. Galvanized steel sides and poly bonded plywood floors are corrosion resistant. Simple ground-driven adjustable ratchet apron drive.

X700 Series 0801XF (MS1102G)



4

4 48-in. 647 Rotary Tiller, 3-Point Hitch

Heavy-duty 3-point hitch design that is ideal for preparing seed-beds, controlling weeds, and other tillage jobs for homeowners, golf courses, estates, nurseries, etc.

X700 Series (Requires 540 RPM Rear PTO, Category 1 3-Point Hitch, and 72 kg of front ballast.) 0205LV

Drive shaft 1001



5

5 45-Gallon 3-Point Hitch Sprayer

Boom sprays a wide 120-in. width. A 19-ft. hose and handgun with 14-in. wand are provided for spraying trees or other remote areas that cannot be reached with the sprayer itself. iMatch compatible.

X700 Series (Requires Category 1 3-Point Hitch and 72 kg of front ballast.) LP22886



6

6 60-in. Frontier Rear Mount Blade, 3-Point Hitch

Excellent for leveling and grading in a variety of situations including gravel roads, driveways, and landscaping. Features full radius moldboard, tubular steel frame, and iMatch compatibility.

X700 Series (Requires Category 1 3-Point Hitch and 72 kg of front ballast.) 1291XF (RB2060L)

7 48-in. Frontier Box Blade, 3-Point Hitch

Can be used for a variety of jobs, including moving material, backfilling, grading, landscaping, and leveling. Features replaceable hardened scarifier points and iMatch compatibility.

X700 Series (Requires 3-Pt. Hitch and 1051XF (BB2048L) two 19 kg weights for front ballast.)



7

8 60-in. Frontier Landscape Rake, 3-Point Hitch

Clears rock or debris and levels soil while preparing a seed bed. Features tubular steel frame and pivot, heat treated tines, and iMatch compatibility.

X700 Series (Requires Category 1 3-Point Hitch and 72 kg of front ballast.) 1191XF (LR2060L)



8

**Front Blades
Tractor Shovels
Snow Blowers
Brooms**

When push comes to shove, you've got plenty of choices, no matter the time of the year or the type of job.





1



2



3



4



5

1 Front Blade

Excellent for pushing snow or other loose material straight forward, to the right or left. Blade surface is curved to roll rather than push material, which requires less power and increases blade capacity.

46-in. - Fits all 100 and S240 Series	BG20020
44-in. - X300 Series	SKU23044
48-in. - X500 Series	SKU23048
54-in. - X700 Series (Requires Front Quick Hitch and Hydraulic Angling. X700 and X710 model must also have the BM20761 Hydraulic Coupler Kit.)	1491M

Rubber Blade Squeegee

Cleans wet or slushy snow more effectively while preventing scratches to the driveway surface. Requires hardware. Price listed does not include hardware. See your dealer for information and pricing.

For 44-in. Front Blade	M146542
For 48- and 54-in. Front Blade (<i>image not shown</i>)	M42868

2 Heavy-Duty Skid Shoe for Front Blade

Extra-wide shoe is made of high-carbon heat-treated steel to provide significant wear-life improvement in commercial applications or abrasive conditions.

For 44-, 48-, or 54-in. Front Blade, two required	AM119321
---	----------

3 Manual Angling Kit

Allows angling blade from the tractor seat for operator convenience.

For 44-in. Front Blade	LP33712
For 48-in. Front Blade	BM23448

4 40-in. Tractor Shovel

Allows tractor to pick up and move material. The blade's opening design and lift height assure complete emptying of material. When the scoop is raised, the tractor shovel can be used to doze, scrape, or level material.

X300 and X500 Series	LP40000
----------------------	---------

5 54-in. Tractor Shovel

Allows tractor to pick up and move material. The blade's opening design and lift height assure complete emptying of material. When the scoop is raised, the 54-in. Front Blade can be used to doze, scrape, or level material.

For X700 Series (Requires 54-in. Front Blade.)	LP54000
Also available for Pre-Quick-Hitch Tractors	LP54001

6 44-in. Snow Blower

Capacity to handle big snow removal jobs. Works well in all snow conditions. Ideal for home and estate owners in all snow regions.

100 and S240 Series	7006M
X300 Series, X500, X520 (X300/38X, X300/42X, X300/42M (SN -150,000), X304 require Lift Assist Spring Kit.)	SKU23045

7 Plastic Skid Shoe

Reduce scratching of driveway and sidewalk surfaces.

44-, 47-, 54-in. Snow Blowers, two required	M157831
---	---------

8 100 Series Power Lift Kit

Designed to make your winter workload more manageable, this kit is easy to install and uses a single electric actuator to effortlessly raise and lower the snow blower.

For 100 and S240 Series Snow Blower	LP44107
-------------------------------------	---------

9 Front Blade Snow Extension Kit

Expand the width of a 54-in. front blade by 30% with this pair of 9-in. extensions. Makes for faster, more efficient plowing.

Fits 54-in. Front Blade	LP53767
-------------------------	---------



6



7



8



9

Front Blades / Tractor Shovels / Snow Blowers / Brooms continued



10

10 Lift Assist Spring Kit

Lowers the effort required to operate implement lift system. Kit includes spring, hardware, decal, and installation instructions. Required for use of 44-in. snow blower on a X300 or X304 Tractor.

X300/38X, X300/42X, X300/42M (SN -150,000), X304 AM136646



11

11 47-in. Snow Blower (X530, X534, X540)

Capacity to handle big snow removal jobs. Works well in all snow conditions. Ideal for home and estate owners in all snow regions.

X530, X534, X540 and X590 (X590 also requires one Extension Spring (M158756, \$8.09) and one Primary Drive Belt (M174506, \$29.80)) SKU23047

12 Quick-Hitch Snow Blowers (X700 Series)

Ideal for home and estate owners in all snow regions. It has the capacity to handle big snow removal jobs. Works well in all snow conditions and is suited for when snow must be moved long distances.

X700 Series 47-in. Snow Blower (Requires Front Quick-Hitch, 2000 RPM Mid-to-Front PTO, and Implement Drive and Upstop. X700 and X710 models must also have the Hydraulic Coupler Kit.) 1474M

X700 Series 54-in. Snow Blower (Requires Front Quick-Hitch, 2000 RPM Mid-to-Front PTO, and Implement Drive and Upstop. X700 and X710 models must also have the Hydraulic Coupler Kit.) 02C1M

Implement Drive and Upstop BM23236

Remote Spout Cap Control Kit (47-in. and 54-in. Snow Blower / X700s)

Flexible cable connects spout cap to the T-handle that is positioned close to the operator. Operator can change angle of discharge deflector on-the-go, without leaving the seat.

47-in. and 54-in. Snow Blower on X700 Series (Contact Dealer for required attaching parts.) (image not shown) BM20960



12

13 Heavy-Duty Skid Shoes for Snow Blower

For commercial or high-use applications to provide additional protection and life. Skid shoes allow adjustments for uneven surfaces and reduced wear on the blower.

44-in. and 47-in. Snow Blower on 100, S240, X300, X500 Series (Standard equipment on 47-in. and 54-in. Snow Blower on X700 Series)

Left-side AM122263

Right-side AM122264



13

14 Drift Blade for Snow Blower

Use on either side of the snow blower to suit conditions. Slices through snow that is higher than the auger housing so snow feeds into the auger rather than falling on the machine.

44-in., 47-in. and 54-in. Snow Blower M88984

Bolts (2 required) 19H1914

Lock Nuts (2 required) N10217



14

15 52-in. Quick-Hitch Rotary Broom

The broom is a four-seasons implement designed to increase the versatility of the tractor so it can perform a variety of sweeping jobs.

X700 Series (Requires Front Quick-Hitch, Hydraulic Angling, 2000 RPM Mid-to-Front PTO kit and Implement Drive Shaft. X700 and X710 models must also have the Hydraulic Coupler Kit.) 3880M

Implement Drive Shaft BM21854



15

16 Electric Lift Kit (X300 and X500 foot lift tractors)

Takes the effort out of raising and lowering front blade and snow blower implements. For all X300s and X500s equipped with foot lift, except the X300R Rear Discharge Tractor. Convenient dash-mounted switch is included. It allows the operator to adjust down force and set implement height while working.

LP33711



16



17

17 60-in. Heavy-Duty Rotary Broom

The broom is a heavy-duty four-seasons implement designed to increase your tractor's versatility.

X700 Series (Requires Mounting Frame, Front Quick-Hitch, Hydraulic Angling, 2000 RPM Mid-to-Front PTO kit and Implement Drive Shaft. X700 and X710 models must also have the Hydraulic Coupler Kit.) 3790M

Implement Drive Shaft BM21854

Mounting Frame BM20626



18

18 Front Quick-Hitch and Hydraulic Lift

Hitch is required on X700 Series with snow blower, front blade, rotary broom, or tractor shovel.

X700 Series BM19782



19

19 Hydraulic Cylinder Lockout Valve

Keeps tractor rockshaft from moving for faster implement hydraulic response. Standard with front quick-hitch. Required for 45 Loader that is only available on X700 Ultimate Series Tractors.

X700 Series AM134625

20 Hydraulic Angling (X400/X500 HDGTs, X700s)

Provides 0- to 27-degrees angling to the right or left using the tractor's hydraulics. Required for some Front Quick-Hitch-mounted implements.

X700 Series BM25609



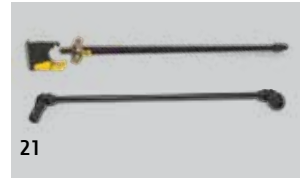
20

21 2000 RPM Mid-to-Front PTO Kit

Required to operate snow blower, rotary broom, or other 2000 RPM-powered front implements.

2WD - X710, X730, X734, X750, X754 BM24361

4WD - X738, X739, X758 BM24362



21

22 Hydraulic Coupler Kit

Four quick-disconnect couplers, protective covers, and color-coded decals for use with hydraulic-controlled implements such as blades and snow blowers. Standard on some tractor models.

X700 and X710 Model Tractors BM20761



22

Mower Decks: Mulch and Leaf Bagging Kits



1

1 48-in. Leaf Bagging Kit

Kit improves mower's vacuum performance for better collection of leaves and dry grass. Includes front- and left-side baffles and attaching hardware.

Fits all 48-in. 100 Series mower decks and 48-in. mower on Z245 and Z255 BG20470



2

2 Mulch Kit (38-in.)

Converts mower so it can be used to mulch grass or leaves. Adjustable baffle allows more or less material to be discharged, depending on conditions. Special mulching blades included.

X300 with 38-in. mower BM21817



3A

3 Mulch Kit

The mulch kit creates individual cutting chambers for precise grass or leaf mulching. Kit includes a mulch plug and high-performance mulching blades.

Riding Lawn Tractors:

For 42-in. mower on 100 and S240 Sport Series, X300, X304, X310 BM21816
(shown in photo 3A)

For 48-in. mower on X320, X324, X360, X500 and X700 Series (similar to photo 3B)

For 54-in. mower on X340, X500, and X700 Series (shown in photo 3B)

For 54-in. mower on 100 Series (similar to photo 3B)

For 54-in. HC mower on X700 Series (similar to photo 3C)

For 60-in. HC mower on X700 Series (similar to photo 3C)

For 60-in. 7-Iron mower on X700 Series (similar to photo 3C)

Residential Zero Turn Mowers:

For 42-in. mower on Z225, Z235 (shown in photo 3A)

For 48-in. mower on Z425, Z435, Z445 (similar to photo 3B)

For 48-in. HC mower on Z645 (similar to photo 3C)

For 54-in. mower on Z425, Z435, Z445 (shown in photo 3B) (except Z445-54HC)

For 54-in. HC mower on Z445, Z625, Z655 (shown in photo 3C)

For 60-in. HC mower on Z665 (similar to photo 3C)

For 62-in. mower on Z465 (similar to photo 3B)

BM20007

BM20827

BG20304

BM23977

BM23978

TCB10953

BM21816

BM20007

BM23975

BM20827

BM23977

BM23978

BM21890



3B



3C



4 Mulch Covers

The Mulch Cover keeps material under the mower deck where it is cut into smaller pieces before falling to the ground.

Fits all 42-in. 100 and S240 Sport Series mower decks	GY00115
Fits all 48-in. 100 Series, Z245, Z255 mower decks	GY20417



5 Mower Deck Wear Plate for 38-in. mower

Wear plate can be bolted to right rear corner of mower deck. Increases mower deck life by reducing wear in the highest wear area; especially suited to sandy conditions.

For 38-in. mower on X300	AM108476
--------------------------	----------



6 Front Blowout Baffle for 42-in. mower

Kit improves the mower deck vacuum performance when bagging leaves or other dry material.

100 Series, S240, X300, X304, X310, Z225 and Z235 side discharge mower	BM20505
--	---------



7 Mower Leaf Bagging Kit

Improves mower vacuum performance when using Power Flow blower. Needs to be removed for high-moisture grass or for mulching attachment. Includes left front, right front, and left side baffle.

For 48-in. mower on X320, X324, X360 (shown in photo), Z425, Z435, Z445, X500 & X700 Series	BM19894
For 54-in. mower on X340, Z425, Z435, Z445, X500 & X700 Series (except HC decks)	BM20985
For 62-in. mower deck on X700 Series (shown in image)	BM20986

8 Mower Leaf Mulcher Plate Assembly for 38-in. mower

Provides an inexpensive means of mulching grass and leaves. Plate keeps material under the mower until it is chopped into small pieces by the rotating blades and blown to the ground.

X300 with 38-in. mower (Requires 2-03H2272 Bolts and 2-14H819 Nuts.)	M150883
Bolts (2 required)	03H2272
Nuts, forged wing (2 required)	14H819

9 42-in. Rear Discharge Mulch Plug Attachment (X300R)

An optional mulch plug is available. Plug closes off opening on bottom of deck so material cannot enter the blower.

Fits Select Series X300R Tractors	BM22326
-----------------------------------	---------



10 Mower Lip Kit for 38-in. mower

Lip can be bolted to the bottom of mower deck to reduce clipping drop; particularly important for full leaf and pine needle pickup.

Left - For 38-in. mower on X300	AM103851
Right rear - For 38-in. mower on X300	AM103852



11 Anti-Scalp Wheel Extension Kit

Designed to give a more uniform cutting height when mowing at 3-in. or higher by allowing the wheel to be adjusted to a lower setting.

For 38-in., 42-in., 42M mower on X300, X304, X310	BM22550
---	---------

Anti-Blowout Kits

Improves mower vacuum performance when using Power Flow blower. Needs to be removed for high-moisture grass or for mulching attachment. Includes left front, right front, and left side baffle.

For 48-in. mower on Z425, Z435, Z445; 48X on X300s, X500s, X700s (image not shown)	AM133764
For 54-in. mower on Z425, Z435, Z445; 54X on X300s, X500s	AM133765
For 62-in. mower on Z465	AM133766



Tow-Behind Attachments Front Thatchers

Spray, haul, thatch, aerate, etc. with your John Deere riding lawn equipment.



1 Utility Cart, Poly*

Poly Cart is rust- and dent-resistant and can be used to haul a variety of materials. Easy dump release; steep angle for complete emptying.

7P (7 cu. ft.) - For use on all John Deere Riding Lawn Tractors and EZtrak Mowers LP21935

10P (10 cu. ft.) - For use on all John Deere Riding Lawn Tractors and EZtrak Mowers (shown) LPPCT10JD

17P (17 cu. ft.) - For use on all John Deere Riding Lawn Tractors LPPCT17JD

8Y (8 cu. ft.) - For use on all John Deere Riding Lawn Tractors. Converts from tow-behind to push cart LP22755

Cart Foot Pedal Kit LP48017

2 Utility Cart, Steel*

Steel cart hauls a variety of materials. Bracketless tailgate means no side channels to obstruct materials when emptying. Recessed bolt heads are out of the way when shoveling.

13 (13 cu. ft.) - For X500 and X700 Series (shown) LPHDC13JD

18 (18 cu. ft.) - For X500 and X700 Series LPHDC18JD

21 (21 cu. ft.) - For X700 Series LPUT21JD

*The loaded weight of the utility cart not to exceed the weight of the tractor and operator. The loaded weight of any attachment towed by an EZtrak mower not to exceed 113 kg.

3 36- x 18-in. Lawn Roller

Packs down new sod, seed, and mole ridges. Polyethylene drum will not dent or rust. Rounded ends will not gouge the lawn or make ruts. 176 kg weight, 42-U.S.-gallon (159 Liter) capacity.

For use with all John Deere Riding Lawn Tractors LPPRT36JD

4 Tow-Behind 40-in. Thatcherator (shown with extension)

Can be used as a dethatcher, aerator, or for preparing an area for new seed. Twenty spring-loaded tines give maximum performance. 3-position adjustment. Weight tray allows for increased scratching power. 8-in. extension available for widths of 48 and 56 inches.

For use with all John Deere Riding Lawn Tractors LPTA40JD

5 38-in. Front Thatcher (Center) (shown with extension)

Used on a regular basis, reduces excessive thatch buildup that can be damaging to a lawn's health. Since it provides more gentle, less aggressive action than a power rake, it can be used as a preventative maintenance tool each time the lawn is mowed.

X300, X500, X700 Series (requires thatcher mounting frame) LP48004

Thatcher Mounting Frame (X300, X500 Series) LP48005

Thatcher Mounting Frame (X700) LP47977

8-in. Front Thatcher (Extension) - Extension is available to provide 8 or 16 inches of additional width.

For 38-in. Front Thatcher LP48003

6 40-in. Spike Aerator

Penetrates soil, allowing air, water, and nutrients to enter the lawn relieving soil compaction. 40-in. width with 10-in. diameter steel tine stars give up to 2-in. penetration. Pneumatic tires for easy pulling. 45 kg capacity weight tray.

For use with all John Deere Riding Lawn Tractors LPSAT40JD

7 Tow-behind Dethatcher

Aerate the top layer of your lawn's soil, while lifting out thatch at the same time. With 20 independently-flexing dual tines, you get maximum thatch pick up.

40-in. working width LP42107





8 40-in. Aerator Spreader

Does two jobs at once: perforates the soil while the calibrated drop-spreader follows with seed, lime, or fertilizer. May also be used to just aerate the lawn. Up to 2-in. penetration. 34 kg spreader capacity with pneumatic tires for easy pulling, and 34 kg capacity weight tray.

For use on all John Deere Riding Lawn Tractors LPAS40JD



9 40-in. Plug Aerator

Removes plugs of soil up to 3-in. deep to allow penetration of air, water, and nutrients and help relieve soil compaction. Pneumatic tires for easy pulling. 79 kg capacity weight tray.

For use on all John Deere Riding Lawn Tractors. LPPA40JD

48-in. Plug Aerator - 113 kg capacity weight tray

X500, X700 Series LPPA48JD



10 Tow-Behind Sprayers

Boom sprays a wide 120-in. width. A 19-ft. hose and handgun with 14-in. wand are provided for spraying trees or other remote areas that cannot be reached with the sprayer itself.

45-Gallon Tow-Behind Sprayer

For use on all John Deere Riding Lawn Tractors. (X700 Series require AM105666 Wiring Harness Extension) LP20485

HP 45-Gallon Tow-Behind Sprayer

Enhanced features offer more volume, distance, and control LP39963

25-Gallon Tow-Behind Sprayer - Boom sprays a wide 90-in. width

For use on all John Deere Riding Lawn Tractors. (X700 Series require AM105666 Wiring Harness Extension) LP19479

15-Gallon Tow-Behind Sprayer - Boom sprays a wide 60-in. width

For use on all John Deere Riding Lawn Tractors. (X700 Series require AM105666 Wiring Harness Extension) LP19478



11 25-Gallon Portable Sprayer

Four rubber feet protect the tank and stabilize it when placed in a cart. A 19-ft. hose with handgun and 14-in. wand are provided for spraying trees, shrubs, etc.

For use on all John Deere Riding Lawn Tractors LP19490



12 42-in. Lawn Sweeper

Hauls 17 bu. of material. Convenient brush-height adjuster has eight positions. Premium features: adjustable hitch, large 12-in. x 3-in. wheels, and collapsible for storage.

For use on all John Deere Riding Lawn Tractors and EZtrak Series LPSTS42JD

Dethatcher Kit for Sweeper (not shown) LP42108

44-in. Lawn Sweeper

44-in. Lawn Sweeper easily picks up lawn debris, grass clippings, and leaves. LP49038

13 Push-Type Spin Spreader (Homeowner)

Convenient to use for spreading seed, fertilizer, insecticide, and salt. Stainless steel hopper and major components. The spreader shutoff is located at the operator station.

22 kg (Includes cover and deflector) LP31340

22 kg Round (Includes cover and deflector) LP22875

22 kg Dual Handle LP31341

36 kg LP21789



14 Pull-Type Spin Spreader

Convenient to use for spreading seed, fertilizer, insecticide, and salt. Polyethylene hopper will not dent or rust. Stainless steel is used for critical components. Large pneumatic tires and solid-steel axles ensure a positive drive.

For use on all John Deere Riding Lawn Tractors

56 kg LP25353

58 kg LP39087

79 kg LP25354

3.5 cu. ft. (79 kg green) LPBS36JD



15 Frontier Broadcast Spreader – Pull-Type Hitch

Spreader can handle 102 kg (SS1022B) or 164 kg (SS1035B) of material such as seed, fertilizer, or salt. The one-piece seamless, all-steel hoppers are built strong to endure heavy use and rough handling.

For X300, X500 and X700 Series Tractors 3061XF (SS1022B)

3068XF (SS1035B)



16 Electric Broadcast Spreader

Spread up to 56 kg of material such as seed, fertilizer, insecticide, or salt. Durable construction and design allows for constant spreader speed. Easily mounts to the Cargo Mount or Click-N-Go brackets. Optional barrier shield also available.

For X300 (excluding X300R), X500 and X700 Series Tractors, (X700 requires Click-N-Go brackets) LP3301

Barrier Shield LP23117



17 Multi Tool*

Save space, storage and money with this all-in-one tool. Includes a 40-in. weight tray that holds up to 45 kg, a core aerator and a dethatcher.

LP39089



Parts and Attachments

Can you customize a John Deere? Sure you can. From lights and fans to bumpers and covers, we've got the means to get you even more attached to your favorite lawn machine. And don't forget: nothing is better for your John Deere than the original parts meant for it.



1 Spark Arrester Muffler Screen

Satisfies California law requiring use of a spark arresting muffler under certain conditions; applies anywhere compliance is required by local ordinances or customer requests.

For X300 and X500 Series tractors (AM135845 shown in photo)	AM135845
For X700 Series tractors	AM108146
EZtrak Series	AM123168



2 1.5-Amp Battery Charger and Maintainer

Helps maintain battery in good condition and ensures that it is fully charged. Most useful when vehicle is not being used regularly. Quick-disconnect allows easy removal from the tractor.

1.5-Amp Battery Charger and Maintainer	TY25866
--	---------



3 Extension, Wiring Harness

30-in. long wiring harness extension is available if required for reaching the vehicle battery when using John Deere sprayers.

X700 Series	AM105666
-------------	----------

4 12-Volt Work Light Kit

35-watt sealed-beam bulb provides additional lighting. Swivels and tilts, so beam can focus on work area. Designed for mounting on rear fender by drilling a hole in the desired location.

X300, X500, and X700 Series	BM17981
-----------------------------	---------

5 Halogen Headlight Kit

Two 75-candlepower halogen bulbs provide over twice as much illumination as the standard 32-candlepower incandescent bulbs.

X520, X534 (SN -060,000), X540	BM21289
--------------------------------	---------

6 Front Bumper

The front bumper is an optional attachment for lawn tractors. It offers additional front-end protection, and gives the tractor a more aggressive appearance.

Double bar - Fits all 100 Series. (shown in photo)	BG20436
Single bar - Fits X300 Series tractors, X500 (SN 20,001-), X530, X534 (SN 60,001-)	BM23056

7 Brush Guard

The brush guard adds a distinctive appearance and protects the front end of the tractor from damage.

For X300, X500 Series tractors	BM23057
X700 Series tractors (shown in photo)	BM24375

8 Seat Net Kit

Seat net kit attaches to back of tractor seat to provide a convenient storage pocket for gloves, etc. Not for use on 21-in. high-back seats on X534, X540 and X590.

S240, X300 and X500 Series	AM136046
----------------------------	----------





8



9



10



11



12

9 Seat Cover

Protects new seats and renews old seats. Cushioned seat for extra comfort.

Riding Mower (S) - 11-in. seat	LP22704
Riding Mower (M) - up to 15-in. seat	LP92324
Riding Mower (L) - up to 18-in. seat	LP92334
Deluxe (S) - up to 11-in. seat	LP40090
Deluxe (M) - up to 15-in. seat	LP92624
Deluxe (L) - up to 18-in. seat	LP92634
EZtrak (seat with armrests)	LP92734
X700 Signature Series - up to 21-in. seat	LP47913

10 EZtrak Riding Mower Cover

Heavy-duty coated fabric provides protection for EZtrak mowers. Reinforced air vents let air circulate and help prevent ballooning from wind.

EZtrak Series	LP98107
---------------	---------

Riding Mower Standard Cover (Not shown.)

Coated fabric for all-season protection of ride-on equipment. Dual vents let air circulate and help prevent ballooning in wind. Elastic cord in bottom hem provides a quick, custom-like fit.

100 Series, S240, X300, and X500 Series except X300R	LP93917
--	---------

11 Riding Mower Deluxe Covers

Heavy-duty coated fabric for extra protection of ride-on equipment. Reinforced air vents let air circulate and help prevent ballooning in wind. Has interior lining and muffler heat shield.

Medium - Fits 100 Series, S240, X300 Series except X300R	LP93617
Large - Fits X300, X500, and X700 Series	LP93647

12 TerraGrip Traction Belt

TerraGrip Traction Belts are the innovative traction aid designed to protect the driving surface. They offer enhanced traction on all surfaces and outperform traditional chains in snow, mud, dirt and wet asphalt or concrete. On top of that, they will not scratch or chip concrete, asphalt or aggregate drive or walkways.

20x8-8 in.	LP39981
20x9-8 in., 20x10-10 in.	LP39856
20x10-8 in., 22x9.5-12 in.	LP39857
22x11-10 in.	LP39858
23x9.5-12 in.	LP39982
24x9.5-12 in.	LP39861
24x12-12 in.	LP39862
26x10.5-12 in.	LP39859
26x12-12 in.	LP39860

X500 4-Wheel Steer Models - Require Wheel Stop Adjustment (see Tractor Manual)
X700 4-Wheel Steer Models - Require BM22725 Wheel Spacer, Sold Separately

13 Handheld Spreader

With a 2 kg capacity, adjustable flow gate, and ergonomic trigger handle, this funnel-shaped hopper easily spreads seed, fertilizer and ice melt.

LP35445



13

14 Wheel Spacer Kit

Allows the use of tire chains on X729, X739 and X749 tractors. Spacers simply bolt to the axle hub and the tires to the spacer. Overall machine width is increased by 1.5-in.

X729, X739, X749 when installing tire chains	BM22725
--	---------

15 Quik-Tatch Weight, 19 kg

Use these cast-iron weights to counterbalance a heavy attachment and/or provide greater traction and stability. Some vehicles have built-in front and/or rear weight brackets to hang the weights on; others require a weight bracket that must be ordered separately.

No box - 100 Series, S240, X300, X500, and X700 Series (When installed on Front Bumper of X700 Series Tractor, M147986 Rod and (2) M40461 Spring Clips are required.) R66949



14

16 Weight Brackets

Provides a tractor-mounted bracket required on some tractor models for hanging two or more 19 kg Quik-Tatch weights.

Rear, 2 weight - 100 and S240 Series Tractors	BG20627
Rear, 2 weight - X304, X324; 4 weight - X534	BM24011
Front, 4 weight - Fits all X300s, X500 (SN 020001-), X530, X534 (SN 060001-)	BM23621
Front, 9 weight - X400/X500 HDGTs, X700 Series	BM24363
Rear, 6 weight - X700 Series (Requires BM20714 Click-N-Go bracket.)	BM20779



15

17 Tire Chains (Pair)

Recommended for use with snow blower, front blade, etc. Use first and second number of tire size to select chains. Third dimension is rim diameter, which does not usually affect chain size.

20x8-8 in. turf tires	TY15959
20x10-8 in., 20x10-10 in. turf tires	TY16200
22x9.5-12 in. turf tires	TY25229
22x11-10 in. turf tires	TY24327
23x9.5-12 in., 24x9.5-12 in. turf tires	TY26227
23x10.50-12 in. turf or bar tires	TY15956
24x12.00-12 in. turf or HDAP tires	TY24328
26x10.50-12 in. turf tires	TY25326
26x12-12 in. turf, bar, or HDAP tires	TY15958



16



17

Parts and Attachments

continued



19



20



21

19 Wheel Weights

Weights for front wheels are recommended with rear grass baggers on slopes and may be required with heavy rear-mounted equipment. Rear weights are recommended for additional traction, especially with snow blowers, front blades, and tillers. Some applications require drilling two holes in wheel rim to mount the weight. Contact dealer for the right combination of weights and mounting hardware for your tractor and attachments.

Cast-Iron Wheel Weights Durable cast-iron wheel weights are mounted to tractor wheels.

15 kg - 5-inch or 6-inch rim (1-weight) (Requires Mounting Hardware BM17978.) BM17962

13 kg - 8-inch rim (1-weight) (Requires Mounting Hardware BM17978.) BM17964

Wheel Weight Mounting Hardware (1) BM17978

22 kg - 12-inch rim (1-weight) (Requires Mounting Hardware BM17985.) BM17972

Wheel Weight Mounting Hardware Kit (1) BM17985

Plastic-Shell Wheel Weights (Includes mounting hardware).

Plastic-shell wheel weights provide traction and stability at a lower cost for popular applications.

14 kg - 8-inch rim (2-weights) BM19123

22 kg - 12-inch rim (1-weight) (image not shown) BM17976

32 kg Cast-Iron Starter Wheel Weight (1) (Requires mounting hardware) 32 kg cast-iron starter weights can be bolted to the 12-in. rims of X700 Series 2-wheel steer tractors. Additional 22 kg cast-iron wheel weights may be added to the starter weight.

X710, X730, X738, X750, X758 (image not shown) BM17973

Mounting Hardware (1) for attaching 32 kg starter weight on 26x12-12 tire BM18089

Mounting Hardware (1) for attaching 32 kg starter weight and (2) 22 kg cast iron weights on 26-in. tire BM18101

Special Edition Weight Adapter (1) For installing a rear cast-iron or plastic-shell wheel weight on special-edition tractors. Provides hole locations needed for wheel weight mounting hardware.

Ultimate Special Edition Tractors and X738, X739, and X758 (not shown) BM21497

20 Ballast Box

Allows weight to be added to the rear of a tractor for improved traction and stability when using the 45 Loader (X700 Ultimate Series Tractors only) or front-mounted equipment.

For Category 1, 3-Point Hitch - X700 Series (Requires Cat. 1, 3-Point Hitch.) BW14313

For use with Click-N-Go Brackets - X700 Series (Requires BM20714 Click-N-Go Brackets.) BM20715

For use with iMatch Hitch (Requires Cat. 1, 3-Point Hitch and LVB25976 iMatch hitch.) BW15073

21 1.875-in. (48-mm) Ball for Hitch

1-7/8-in. (48 mm) ball hitch. Attaches to drawbar or rear hitch to allow towing. 0.75-in. diameter post thread.

X300, X500 and X700 Series PM05101

22 Engine Coolant Heater (110 Volt)

Attaches to the engine cylinder block. Plugs into a 120-Volt electrical outlet to warm a diesel engine for fast cold weather starts. 400 watt rated output.

X750, X754, X758 (Requires Engine Block Heater Adapter.) (shown in image) AR87167

Engine Block Heater Adapter X740, X744, X748, X749 (SN -060000) AM134805

Engine Block Heater Adapter X750, X754, X758 (SN 010000-) MIA881629

23 Fuel Protect

For gasoline engines. John Deere Fuel Protect is a unique formula developed to ensure optimum performance and protection year-round. Ensures quick starts in all 2- and 4-cycle engines.

8 oz TY27534

24 Auxiliary Alternator Kit

Operates in parallel with standard 20-amp gas engine-equipped alternator to bring the total of 12-Volt electric power to 40 amps for operating sprayer, optional cab equipment, etc.

X710, X730, X734, X738, X739 BM24425

25 Home Maintenance Kit

A convenient way to obtain maintenance parts as specified in the operator's manual; includes engine oil filter, engine oil, fuel filter, fuel filter element, air filter element foam, and spark plug(s).

L100, 102, Z225 (SN -060000), LA100 LG251

Z245 (SN -100000), Z425 (SN 040,001-100,000), LA155, LA165, LA175, D150, D155, D160, D170 LG264

Z435, Z445, Z465, Z645, Z625, Z645, Z655 (SN 100,001-140,000), Z665 (SN 120,001-140,000) LG269

L108, 115, LA105, LA110, LA115, Z225, Z435, Z625 (SN 060001-100000) LG253

LA125, D110 (SN 500,001-), D120 LG262

Z425 (SN -040,000), LA135, LA145; D130, D140 (SN -400,000) LG263

X300 (SN -180,000), X304 (SN -180,000), X300R (SN -150,000) LG256

S240, X300, X304, X320, X324, X340, X360 (SN 180,001-), X300R (SN 150,001-); X310 (SN 220,001-); X500, X530, X534 (SN 60,001-); X590, Z445, Z465, Z645, Z655, Z665 (SN 140,001-) LG265

X320, X324, X340, X360 (SN 000,001-180,000); X500, X530 (SN 50,001-60,000), X534 (SN 10,001-60,000); Z445, Z465 (SN 000,001-100,000) LG249

X520, X540 LG257

X475, X575, X700, X710 LG245

X485, X485 SE, X585, X585 SE, X720, X724, X728, X728 SE, X729, X730, X734, X738, X739 LG244

X495, X595, X595 SE (SN 040,001-), X740, X744, X748, X749, X750, X754, X758 LG260

D100, D105 (SN-200,000), D110 LG266



22



23



24



25

Z225 (SN 100,001-120,000)	LG267
Z225 (SN 120,001-); Z245, Z425 (SN 100,001-)	LG268
D125 (SN 500,001-); D130, D140 (SN 400,001-)	LG275
D105 (SN 200,001-); Z235, Z255	LG276

26 Mower Deck Leveling Gauge

Allows quick and accurate mower deck leveling and cutting-height adjustment.

All vehicles with mower decks AM130907



26

27 Bucket (5 gallon)

This black 5-gallon bucket perfectly complements the CargO Mount single and double bucket holders. It is made of sturdy black plastic.

100, S240, X300, X500, and X700 Series except X300R with Bucket Holder LPJD400



27

28 Bucket Holder (Single)

Transporting mulch, plants, or debris is easier with the CargO Mount single bucket holder. For use with any standard 5- or 6-gallon bucket. Will carry up to 22 kg of material.

100, S240, X300, X500 Series, except X304, X324, X300R, X534 (Requires 5- or 6-gallon bucket.) LPJD100
Bucket (5 gallon) LPJD400

29 Bucket Holder (Double)

Transporting mulch, plants, or debris is easier with the CargO Mount single bucket holder. For use with standard 5-gallon buckets. Will carry up to 31 kg of material.

X300 (except X300R), X500, and X700 Series (Requires two 5-gallon buckets.) LPJD301
Bucket (5 gallon) LPJD400



28

30 Mower Blades-Standard

Standard side-discharge blades provide like-new performance.

100 Series

42-in. mower (complete kit)	GY20850
48-in. mower (complete kit)	GY20852
54-in. mower (complete kit)	GY20679

EZtrak

42-in. mower on Z225 and Z235 (complete kit)	AM141031
48-in. mower on Z245 and Z255 (complete kit)	AM141035
48-in. mower on Z425, Z435, Z445 (3 required)	M145476
48-in. HC mower on Z645 (3 required)	TCU30315
54-in. mower on Z425, Z435, Z445 (3 required)	M143520
54-in. HC mower on Z445, Z625 and Z655 (3 required)	TCU30316
60-in. HC mower on Z665 (3 required)	TCU15881
62-in. mower on Z465 (3 required)	M158112



29

Select Series (X300, X500, X700 Signature Series w/HC Decks)

38X mower on X300 (complete kit)	AM141039
42X mower on S240, X300, X304, X310 (complete kit)	AM141032
42 Rear Discharge Mower X300R (complete kit)	AM140974
48X mower on X300 Series, X500 Series, X700 Series (3 required)	M145476
54 HC on X700 Series (3 required)	M164016
54X mower on X300 Series, X500 Series, X700 Series (3 required)	M143520
60 HC on X700 Series (3 required)	M163983
62X mower on X700 Series (3 required)	M143504

31 Mower Blades-High Lift

High lift blades provide improved bagging performance in heavy and/or wet grass conditions. Can also be used for side discharge.

100 and S240 Series

42-in. mower (2 required)	AM141034
48-in. mower (3 required)	GX21785

EZtrak

42-in. mower on Z225 and Z235 (complete kit)	AM141034
48-in. mower on Z245 and Z255 (complete kit)	AM141036

Select Series (X300, X500, X700 Signature Series w/HC Decks)

38X mower on X300 (complete kit)	AM141041
42X mower on X300, X304, X310 (complete kit)	AM141034
54X mower on X320, X340, X500 Series, X700 Series (3 required)	M152726
60-inch HC mower on X700 Signature Series (3 required)	TCU15881

32 Mower Blades-Mulching

Blade included with the mulch kit is designed for optimum mulching performance. Can also be used for side discharge.

EZtrak

42-in. mower on Z235 (complete kit)	AM141033
48-in. mower on Z425, Z435 and Z445 (3 required)	M127673
48-in. HC mower on Z645 (3 required)	M136185
54-in. mower on Z425, Z435 and Z445 (3 required)	M145516
54-in. HC mower on Z625 and Z655 (3 required)	M135334
60-in. HC mower on Z665 (3 required)	M168223
62-in. mower on Z465 (3 required)	M145719

Select Series (X300, X500, X700 Signature Series w/HC Decks)

38X mower on X300 (complete kit)	AM141040
42X mower on S240, X300, X304, X310 (complete kit)	AM141033
42X Edge Mulch mower on X300, low lift blades (complete kit)	AM140332
42 Edge Mulch mower on X300 (complete kit)	AM140973
42 Rear Discharge Mower X300R (complete kit)	AM140975
48X mower on X300 Series, X500 Series, X700 Series (3 required)	M127673
54X mower on X300 Series, X500 Series, X700 Series (3 required)	M145516
54 HC on X700 Series (3 required)	M135334
60 HC on X700 Series (3 required)	M168223
62X mower on X700 Series (3 required)	M145719
60-inch 7-Iron mower on X700 Series (3 required)	M168223



30



31



32



This literature has been compiled for worldwide circulation. While general information, pictures and descriptions are provided, some illustrations and text may include finance, credit, insurance, product options and accessories. NOT AVAILABLE in all regions. PLEASE CONTACT YOUR LOCAL DEALER FOR DETAILS. John Deere reserves the right to change specification, design and price of the products described in this literature without notice. John Deere's green and yellow color scheme, the leaping deer symbol, and JOHN DEERE are trademarks of Deere & Company.