

PRODUCT INFORMATION

RC 250-295 Major Features and Benefits

Helix Reel (Optional – Must choose Helix or Standard)

The Helix Design

The optional Helix Reel has a robust build and has been thoroughly tested to withstand the most challenging conditions. The helical design of the reel crossbars more evenly distributes the torque and pressure on the reel as it moves through the feed, which in turn helps eliminate stress on the drive system. This reel also delivers feed to the augers more consistently for smoother, faster mixing performance and more even unloading.



Open Center Reel

-Helix Reel only

The all-new, open-center design eliminates obstructions in the reel and provides superior feed movement and unparalleled mixing action. The benefits are unmistakable, with faster, more consistent mixing, improved load leveling, optimized mixer-space utilization and no dead spots for the ultimate in ration quality. This design also allows the mixer to efficiently handle a wide range of materials, from high distillers grain to high roughage rations.



(Side is removed for viewing purposes.)

Mix Bar

-Helix Reel only

The mix bar runs diagonally across the center of the reel to enhance feed movement. It helps to “split” or “fold” feed as it rotates across the chamber, significantly increasing the mixing action. This increased tumbling is particularly important in wet rations with large amounts of distillers grain. The reel crossbars keep feed moving efficiently around the outside of the chamber and the mix bar does the same in the open center of the reel, eliminating the possibility of dead spots.



PRODUCT INFORMATION

RC 250-295 Major Features and Benefits

Helix Crossbar End Supports

-Helix Reel only

The end supports for the Helix crossbars have a rugged, durable design and are built to fully support and drive the reel under the heaviest loads and in the toughest conditions. The design has been heavily tested with the toughest beef and dairy rations and has been proven to provide reliable performance with both dry, free-flowing materials and wet, heavy mixes.



End Panel Wipers

-Helix Reel only

One of the reel crossbars on each end of the reel is fitted with an end-panel wiper. The wipers are designed to enhance feed movement by continually moving material away from the end panel of the machine, helping eliminate the possibility of accumulation or dead spots around the end supports.



Standard Reel (Optional – Must choose Helix or Standard)

Large-Diameter Standard Reel

The large-diameter reel gently lifts material up into the side blending augers. The large reel provides more room for feed movement and better mixing action. This also results in fast mixing and unloading, which saves time and helps ensure ration quality. The reel design minimizes force and pressure, resulting in low horsepower requirements and economical operation.



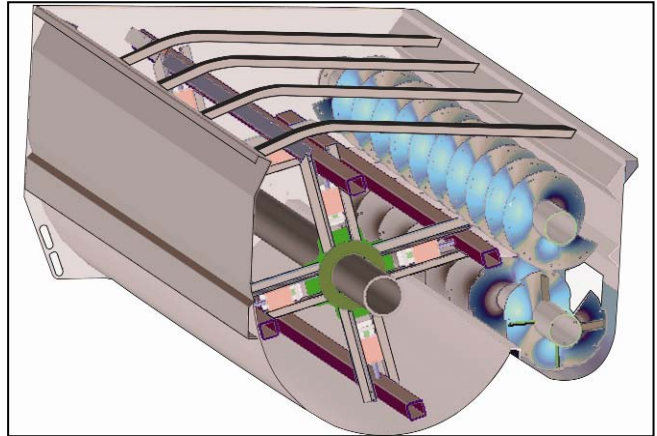
PRODUCT INFORMATION

RC 250-295 Major Features and Benefits

4- or 5-Arm Standard Reel

- RC 250/260/270 – 4-arm (Roughage Series)
5-arm (Grain Series)
- RC 295 – 5-arm only

The 4-arm reel minimizes the pressure placed on the higher-roughage feed and improves feed movement from the front to the rear of the mixing chamber. The extra space within the four-arm reel enhances hay processing and reduces mixing time. The 5-arm reel ensures faster mixing and unloading in heavier grain rations and provides a more even load distribution on the reel arms. Faster unloading, again, helps ensure ration quality. Smoother operation with less torque on the drive results in longer life vs. 3-arm reels.



Two Crossbar Support Assemblies

- Standard Reel only

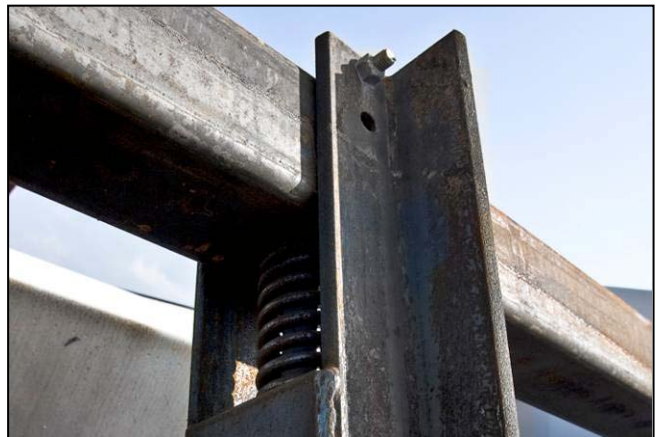
The crossbar support assemblies have ample strength to handle high-grain and high-forage rations, as well as the heavy use cycles encountered on large dairy and feedlot operations. The design allows more room for end-to-end feed flow and provides improved mixing action.



Spring-Loaded, Adjustable Reel Crossbars

- Standard Reel only

The spring-loaded reel crossbars design helps relieve pressure when needed for added protection. The open-spring design helps prevent them from becoming packed and jammed with feed. The reel crossbars also have built-in adjustment capability. Two different settings provide the operator with flexibility for use with standard or higher-hay rations.



PRODUCT INFORMATION

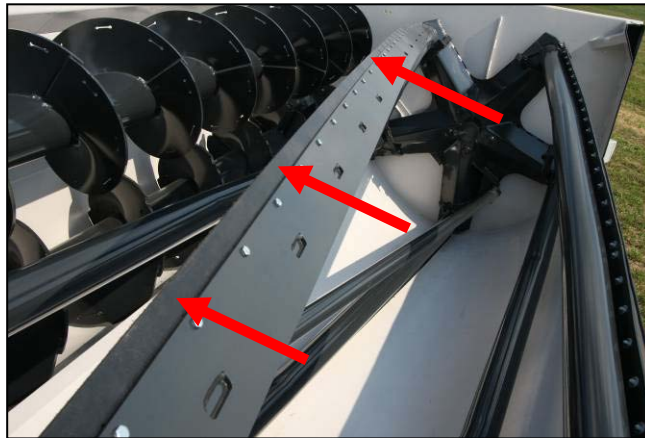
RC 250-295 Major Features and Benefits

Mixing Chamber

Polyethylene Crossbar Wipers

- Helix Reel – 3 wipers
- Std. Reel Grain Series – 3 wipers
- Std. Reel Roughage Series – 2 wipers

Polyethylene wipers fitted on select reel crossbars ensure mixing of even the finest ingredients to help eliminate separation and provide superior ration quality. Full wipers provide a faster, more even discharge than a paddle rotor, especially at the end of the load.



Large, Flanged, Bolted Upper and Lower Augers

- Upper auger flighting - 1/2" thick
- Lower auger flighting - 5/8" thick
- Auger Diameters:

<u>RC 250/260</u>	-Upper – 22"	-Lower – 24"
<u>RC 270</u>	-Upper – 24"	-Lower – 24"
<u>RC 295</u>	-Upper – 28"	-Lower – 28"

The large augers work together to provide an even end-to-end mixing action. They are flanged and bolted to the drive shaft assembly for easy removal and serviceability. 3/4" flighting on the lower auger near the discharge door increases flighting life.



Upper Auger

The higher-speed upper auger moves material rearward to ensure excellent end-to-end mixing and help keep the load level. Hardened-edged knives can be added to the upper auger in conjunction with the optional Hay Maxx System, for more effective hay handling. They provide preprocessing of roughages before they enter the mixing chamber.



PRODUCT INFORMATION

RC 250-295 Major Features and Benefits

Lower Roughage Auger

-Roughage Series only

The lower auger moves material forward to aid in proper end-to-end mixing and ensure fast feed flow to the discharge door. The special roughage auger is designed for rations with higher hay content and improves ration quality by processing hay to a more uniform length. Weld-in, hardened knives improve hay processing and are self sharpening for longer life. Relaxed notches on lower auger reduce load spikes for lower horsepower requirements when processing hay.



Lower Grain Auger

-Grain Series only

The grain auger also moves material forward to aid in proper end-to-end mixing and ensure fast feed flow to the discharge door. It is designed for rations with higher grain content and maintains ration quality by gently handling delicate feeds like flaked corn. Standard notches help draw material into the auger for superior mixing and processing of small quantities of hay into the ration. Holes are available to add round knives for increased flexibility when processing minimal amounts of hay in finishing rations.



Mixer Box Construction

Heavier Discharge Door with Large Opening

-RC 250/260/270 – 42" x 22"

-RC 295 – 48" x 24"

The discharge door has been reinforced for rugged durability and long life. Added bracing helps eliminate fatigue or bowing over time for reliable, secure closure. The door linkage has been improved with a stronger pivot mount and a self-aligning link bar for reduced strain on the linkage during use. These mixers also have a large door opening, offering fast and even unloading without material separation.



PRODUCT INFORMATION

RC 250-295 Major Features and Benefits

Hydraulic 4-Auger Discharge with Magnets

(Optional – Must choose 4-auger or slide tray)

-RC 250/260/270 only

-9" augers

The 4-auger discharge has a reliable, low-maintenance hydraulic drive that provides a smooth, even discharge of all ration types. The discharge augers are simple to remove for easy serviceability. Long-lasting, replaceable polyethylene chute liners prevent rust and limit wear. The chute design allows adjustment for high bunks and discharge magnets promote herd health.



Long, Adjustable Slide-Tray Discharge with Magnets

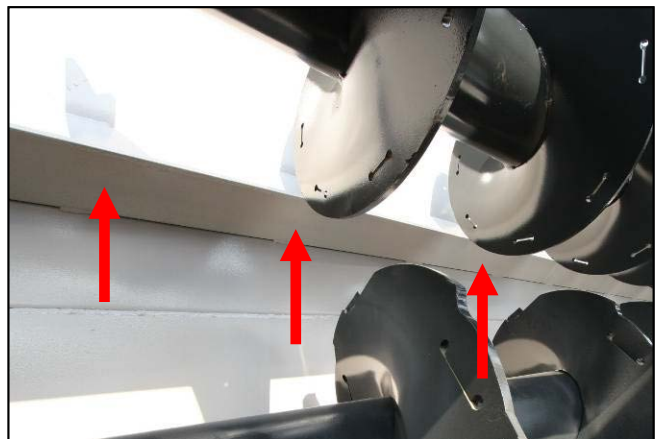
(Optional – Must choose 4-auger or slide tray, standard on RC 295)

The high discharge point of RC mixers allows use of this simple, dependable and low-cost option for most applications. The slide tray has simple hydraulic controls and the long discharge tray allows feeding deeper into cement bunks to help prevent feed loss from the wind. The slide tray cylinder and linkage have been relocated and improved over previous models. The new design provides more control and adjustability for different feeding situations and eliminates the possibility of the tray extending over center when opened.



Upper- and Lower-Auger Shear Angles

Upper and lower shear angles work in conjunction with the upper and lower augers to increase hay processing efficiency. The shear angles also improve end-to-end mixing action and help to strengthen the mixer box.



PRODUCT INFORMATION

RC 250-295 Major Features and Benefits

Redesigned Unit Shell

The unit shell has been redesigned for increased strength and better overall appearance. The single-piece side panels have been strengthened to provide improved durability over time. The heaviest standard reel and auger hoppers in the industry provide outstanding durability and long service life. Additionally, several cosmetic improvements have been made, providing a sleeker, more stylish look for enhanced overall visual appeal.



Standard or Lowered Right Side

-Must choose when ordering

The option of either a standard or lowered right side, with a 12" drop, allows customers the flexibility to select the setup that best matches the needs of their operations. The standard right side provides a wider top opening for easier loading with a clamshell on larger feedlot operations. The lowered right side provides a lower height for easier loading.



Bucket Guards

Sturdy bucket guards fitted across the top of the mixing chamber help protect the reel and upper auger from accidental bucket contact and damage when loading feed ingredients.



PRODUCT INFORMATION

RC 250-295 Major Features and Benefits

One-Piece Oil-Bath Door with Improved Latch and Integrated Ladder

The one-piece door provides sturdy protection for the oil bath and drive components. The door latch has been improved compared to previous models and now has a convenient, single handle that provides more secure closure. Gas-charged lift cylinders on the door provide easy opening and simple, convenient access to chains, sprockets and tighteners. The integrated ladder has also been improved over previous models for safe and convenient viewing.



Drain Holes & Plugs

RC Series models are fitted with convenient outlets at the bottom of the reel and auger hoppers to allow rainwater to drain out. Plastic plugs help prevent corrosion and allow for easy removal.



Undercarriage/Subframe

Heavy-Duty Subframe

-Truck models only

The heavy-duty subframe provides a solid base for mounting the box on the truck chassis. Heavy-duty tube with 3/8" wall thickness helps eliminate potential frame twisting.



PRODUCT INFORMATION

RC 250-295 Major Features and Benefits

Single-Axle Undercarriage w/ Steel Bumper

(Optional – Must choose single or tandem axle)

- Trailer models only
- RC 250/260/270 only (Standard on RC 250)
- 6"x10" tubing
- 4 1/2" spindle w/ HD 10-bolt hubs

The undercarriage is made of rectangular tubing for superior strength and dependability. Heavy-duty spindles and hubs provide optimum strength for durability and long life.



Tandem-Axle Undercarriage w/ Steel Bumper

(Optional – Must choose single or tandem axle)

- Trailer models only
- RC 260/270
- 6"x10" tubing
- 3 3/8" spindles w/ HD 10-bolt hubs
- Standard on RC 295
- 6"x12" tubing
- 4 1/2" spindles w/ HD 10-bolt hubs

The undercarriage is made of rectangular tubing for superior strength and dependability. Heavy-duty spindles and hubs provide optimum strength for durability and long life. Oscillating bogies provide better flotation and spread the load over a greater area for soft conditions or when crossing slatted barn floors.



Drive System

Shear-Bolt Protected PTO

- RC 250/260 – 540 or 1000 RPM
- RC 270/295 – 1000 RPM only

The mixer drive is protected by an easily-accessible and easily-replaceable shear bolt. The 1000 RPM PTO is available in 1 3/8" or 1 3/4" yoke size.

An optional CV PTO is also available.



PRODUCT INFORMATION

RC 250-295 Major Features and Benefits

Standard Rear Oil-Bath Drive

- RC 250/260/270 – 80-100-120-140 roller chains
- RC 295 – 100-140-160-200 roller chains

The roller chains have been resized compared to previous models for increased durability and longer service life. The entire heavy-duty chain and sprocket drive runs continually in an enclosed oil bath for added protection and longer life. The rear location allows for convenient service in truck-mount applications.



Improved Oil-Bath Lip Seal

The lip-seal design helps prevent contamination of the oil bath with dirt and debris to minimize wear on the drive components. This seal also helps prevent oil leakage from the system.



Heavy-Duty Chain Tighteners

The chain tighteners have a heavy-duty design that eliminates bending and assures proper chain tension and alignment. They are easy to adjust with simple eyebolts and are spring loaded.



PRODUCT INFORMATION

RC 250-295 Major Features and Benefits

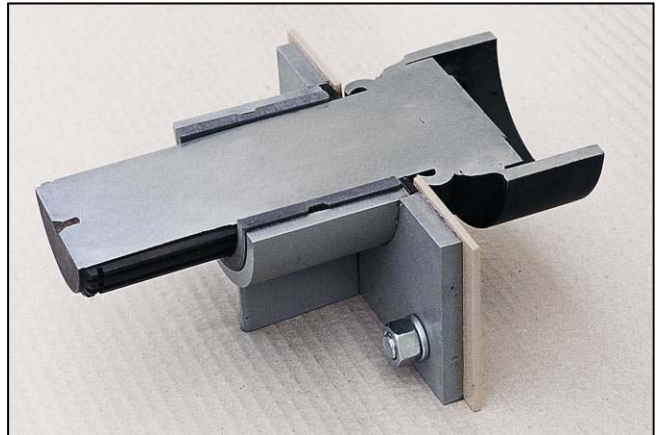
Splined, Cast Steel Drive Shafts and Splined Drive Sprockets for Reel and Augers

The auger drive shaft plugs are one-piece cast steel for increased strength and dependability when compared to welded shafts, as there are no joints to fail. The drive flanges are an eight-bolt design that provides more strength versus other designs. Splined shafts and sprockets provide extra strength and reliability. They also allow easy removal and reassembly, simplifying future service.



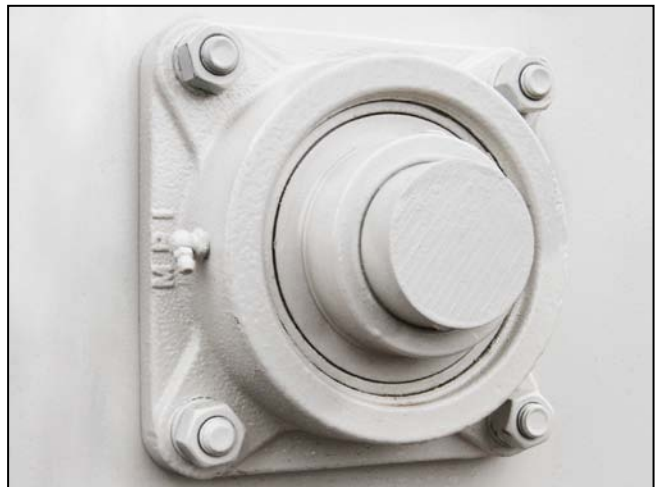
Nylon, Sleeve-Type, Reel-Shaft Bearings

Nylon, sleeve-type bearings offer simplicity, low maintenance and long service life. In the event that they do require service at some point, their design allows easy future serviceability.



Heavy-Duty, Auger-Shaft Bearings

The heavy-duty, auger-shaft bearings are self-aligning. They are mounted on the outside of the mixing chamber in the front for easy serviceability and long life. These bearings have a triple-lip seal to help prevent contamination from feed for longer bearing life.

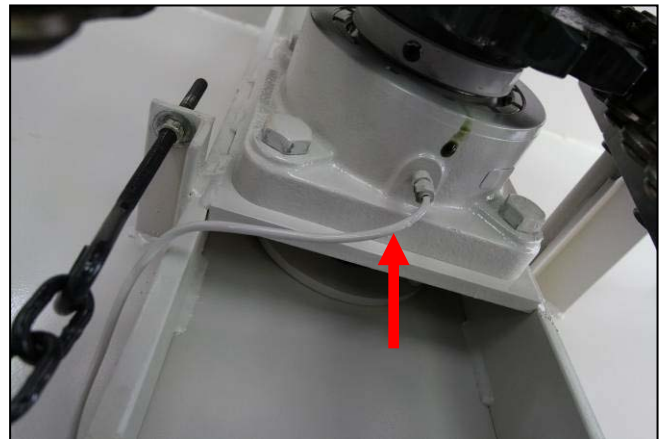


PRODUCT INFORMATION

RC 250-295 Major Features and Benefits

Copper Grease Lines

Copper grease lines assure proper grease flow to the bearings. They provide all-weather reliability compared to plastic lines.



External Grease Bank

Grease zerks are conveniently located on the outside of the oil bath and on front bearings to allow for easy lubrication. The design also ensures easier accessibility and maintenance on front auger and reel bearings for truck-mount units.



Mixer Controls

Truck-Cab Controls

-Truck models only

The heavy-duty, high-quality joystick control provides long service life, even with high feeding cycles. If needed, service parts are readily available in the U.S. and Canada.



PRODUCT INFORMATION

RC 250-295 Major Features and Benefits

Scale System

4-Point Scale System with Compression-Type Load Cells

This system comes as standard equipment and offers up to 99.9% accuracy. A heavy-duty check system ensures scale accuracy and long life.



Electronic Indicators (Optional)

There are different scale manufacturers, models and options available to customize the system to meet the needs of each individual operation.



Notable Options

Heavy-Duty Chain Drive (Optional)

- RC 250/260/270 only (Standard on RC 295)
- 100-120-140-140 roller chains
- 2 ½" countershaft/bearings

This option provides heavier chains throughout the drive system for added strength and durability. The heavy-duty drive allows the ability to mix even the heaviest feedstuffs and helps RC models handle the toughest mixing conditions and most extreme use cycles.



PRODUCT INFORMATION

RC 250-295 Major Features and Benefits

Hay Maxx System[®] (Optional)

-Includes extra hardened-edge, sickle-section knives

The Hay Maxx System helps process up to 20% hay by weight to get dry hay incorporated in the ration. The back stop helps hold hay in place during processing. The system can process a wide variety of feedstuffs before they enter the mixing chamber, offering ration flexibility and quicker, more efficient mixing. The end result is a uniform ration with fewer fines vs. auger mixer processors.



Roughage Maxx System[®] (Optional)

The Roughage Maxx System is a scalloped-knife option for the roughage auger. These knives provide efficient processing when incorporating up to 20% good-quality hay. The bolt-on scalloped knives are removable and replaceable, offering flexibility to change the amount of processing for different rations. The Roughage Maxx System works best with the patented Hay Maxx System and will help provide a more uniform ration

